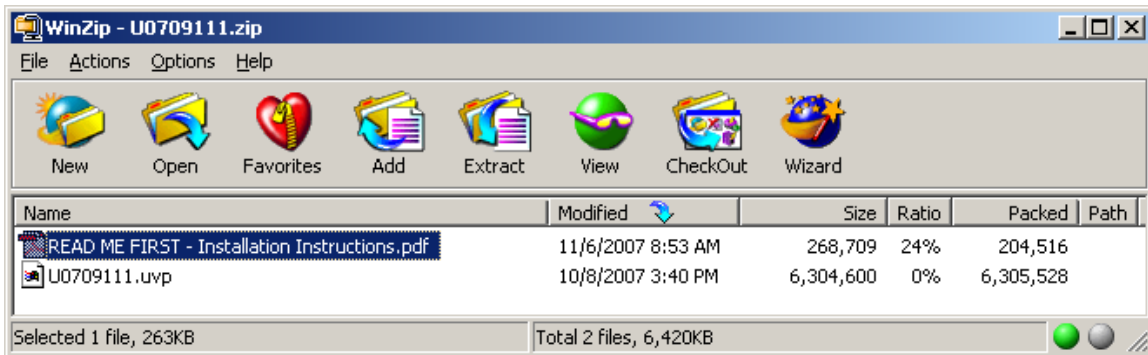




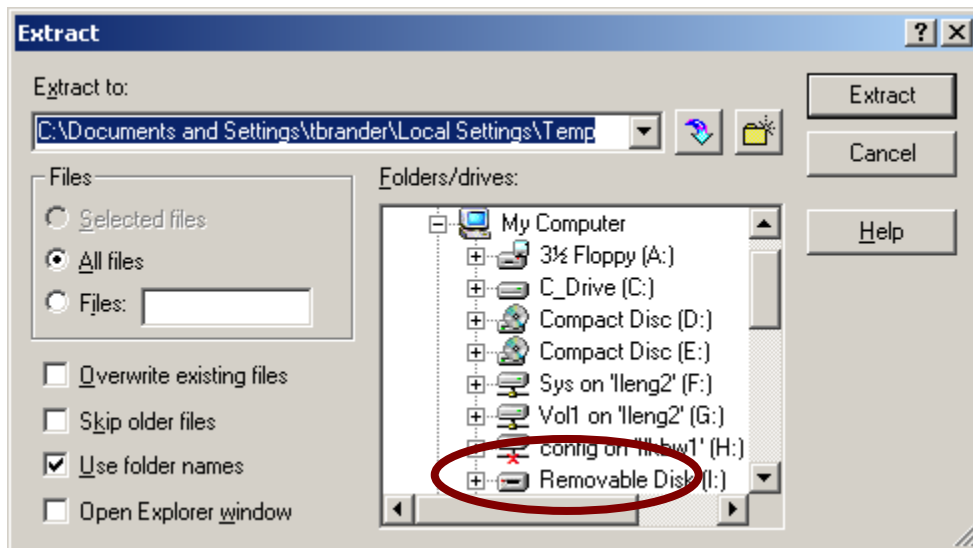
AQUOS® LCD TV Firmware Download Instructions:

Download Instructions:

1. Insert a USB memory device, into your PC's USB port. (The USB memory device **MUST** be formatted as **"FAT"**)
2. Double click the file: **"tel_soft_D64U_xxxxxxxx.zip"** to open the compressed file. It will open in a window similar to this:



3. Click on **"Extract"** to select where you want to save the files. Your USB memory device should appear with a name such as **"Removable Disk"** or with the brand name of the device. Click on the drive option for your USB memory device, and click **"Extract"**





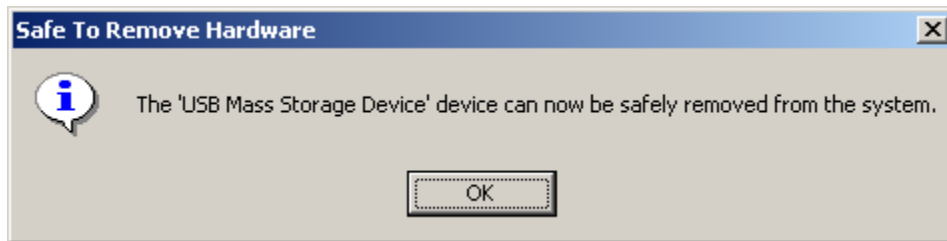
*Note – Do not Extract the Firmware update file to any sub-folder on the USB memory device. The Firmware update file must be in the root directory.

4. Before removing your USB memory device from the computer, ensure that you “Safely Remove” it. Click on the icon that appears like this:



and is labeled “Safely Remove Hardware”.

5. A small submenu will appear saying: “Stop USB Mass Storage Device” (a series of Drive letters may also be listed). A confirmation screen should appear, letting you know it is safe to remove the USB memory device.



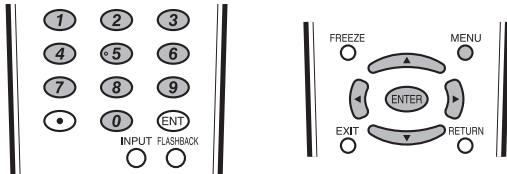
6. Physically remove your USB memory device from the USB port on your computer.
7. Follow the steps on the next page to perform the Firmware Upgrade of your Sharp AQUOS® LCD TV.

Useful adjustment settings

Software Update

This function allows software updates by inserting a USB memory device with the update file into the USB terminal on the TV.

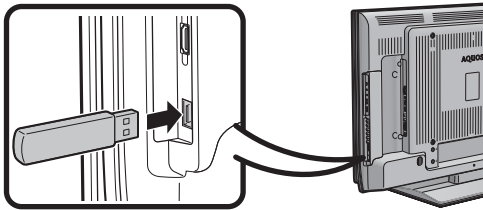
To check for the availability of a software update, visit www.sharppusa.com. If you have any questions, please call 1-800-BE-SHARP (800-237-4277).



CAUTION

- Do not remove the USB memory device or unplug the AC cord while the software is being updated.
- Be sure to properly follow the whole procedure described below, step by step. Otherwise, for example, the TV cannot read the data in the USB memory device and software updating will fail.

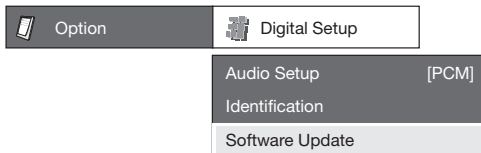
- 1 Insert the USB memory device with the update file into the USB terminal on the TV.



- 2 Press **MENU** to display the MENU screen, and then press **◀/▶** to select "Digital Setup".

- 3 Press **▲/▼** to select "Software Update", and then press **ENTER**.

- If you already set the Secret No., go to step 4.



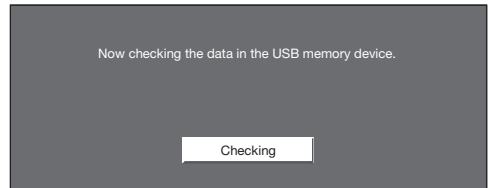
- 4 Input the 4-digit secret number by using **0-9**.



- 5 Press **ENTER** to start checking the data in the USB memory device.

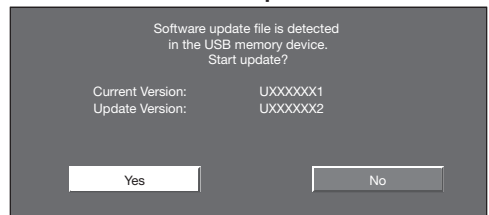


- 6 During the data checking, "Checking" blinks.



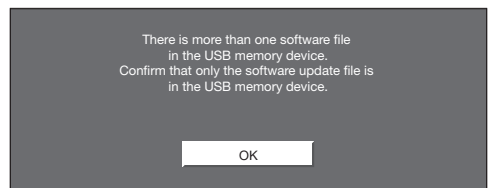
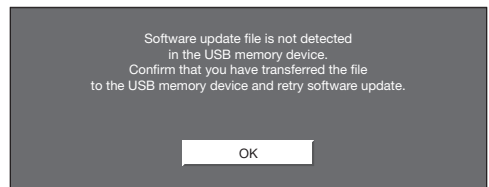
- The current version of the TV software and the version of the update file on the USB memory device are displayed. To update the TV software with the update file, select "Yes", and then press **ENTER**.

Example



- If the USB memory device is not properly installed or the correct update file cannot be found on the USB memory device, an error message is displayed.

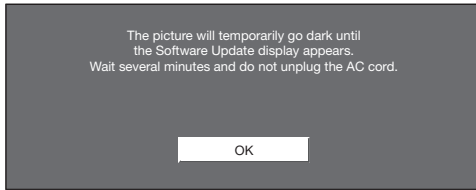
Check the file on the USB memory device, and then reinsert the USB memory device correctly.



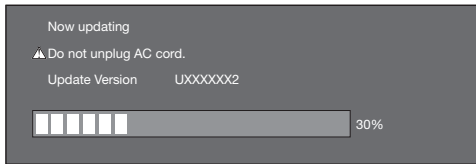
Useful adjustment settings

7 Press **ENTER** to start updating.

- The screen becomes dark for a while until the update screen can be displayed. Please wait for the update screen to appear. Do not unplug the AC cord.



Example

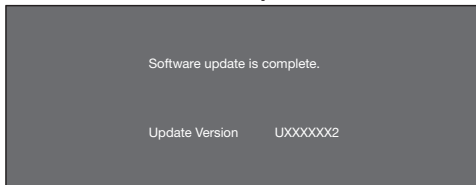


CAUTION

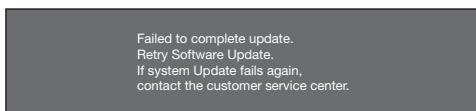
- **Do not remove the USB memory device or unplug the AC cord while the software is being updated.**

8 When the software is successfully updated, a screen is displayed indicating that the update process is completed. After this screen is displayed, the TV automatically turns off and then turns on again.

Example



- If the update has failed, check the file in the USB memory device and try Software Update again.



9 After the screen shown below is displayed, press **ENTER**.



10 Remove the USB memory device.