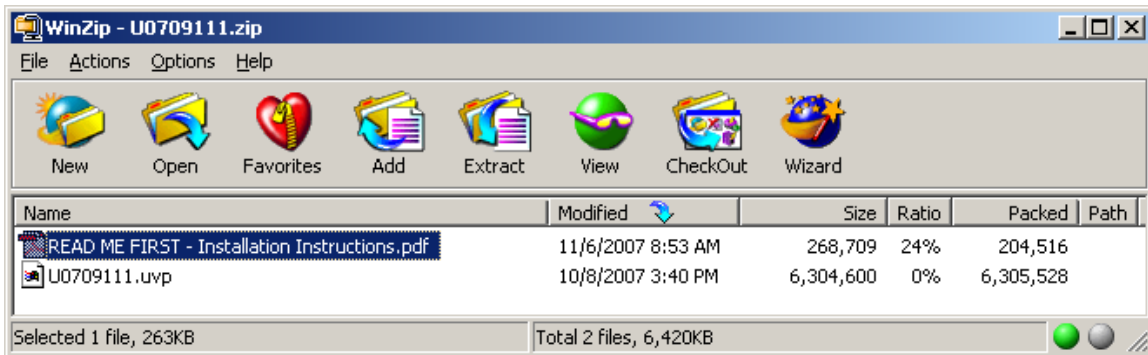




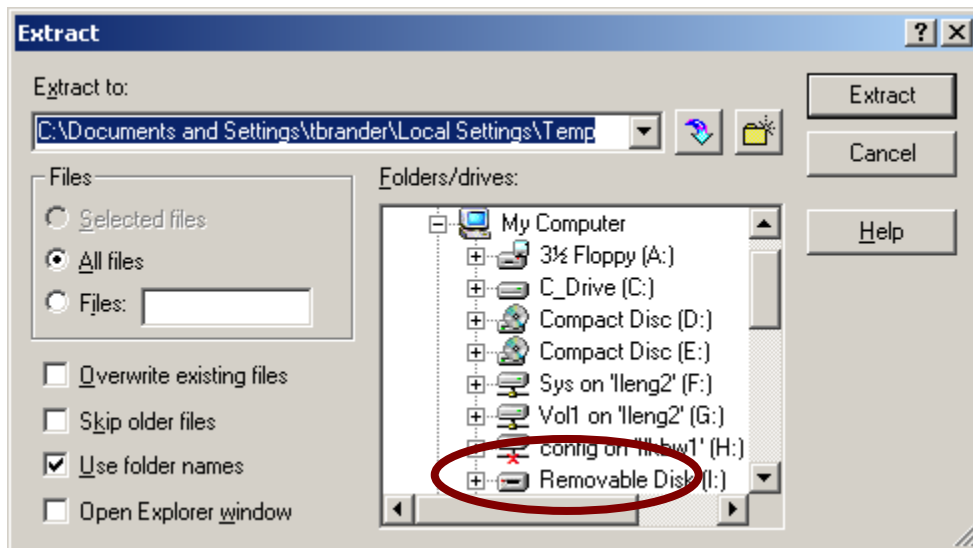
AQUOS® LCD TV Firmware Download Instructions:

Download Instructions:

1. Insert a USB memory device, into your PC's USB port. (The USB memory device **MUST** be formatted as **"FAT"**)
2. Double click the file: **"tel_soft_LE810_U1004263.zip"** to open the compressed file. It will open in a window similar to this:



3. Click on **"Extract"** to select where you want to save the files. Your USB memory device should appear with a name such as **"Removable Disk"** or with the brand name of the device. Click on the drive option for your USB memory device, and click **"Extract"**





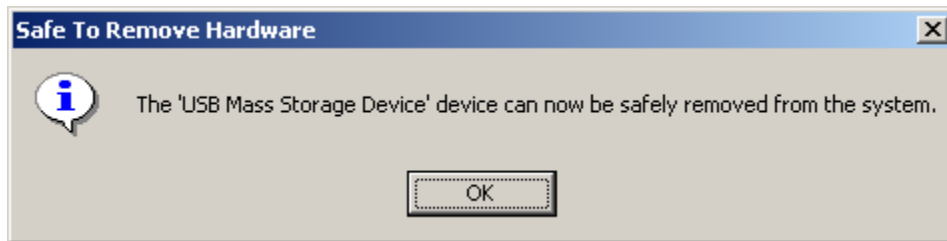
*Note – Do not Extract the Firmware update file to any sub-folder on the USB memory device. The Firmware update file must be in the root directory.

4. Before removing your USB memory device from the computer, ensure that you “Safely Remove” it. Click on the icon that appears like this:



and is labeled “Safely Remove Hardware”.

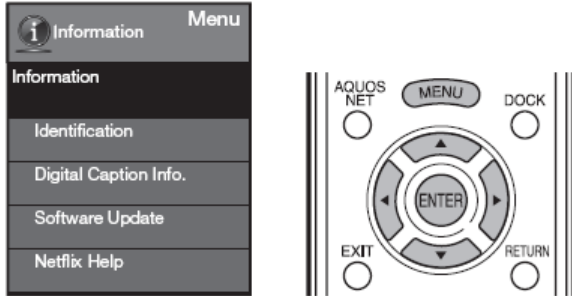
5. A small submenu will appear saying: “Stop USB Mass Storage Device” (a series of Drive letters may also be listed). A confirmation screen should appear, letting you know it is safe to remove the USB memory device.



6. Physically remove your USB memory device from the USB port on your computer.
7. Follow the “Updating the Software with a USB Memory Device” steps on the next few pages to perform the Firmware Upgrade of your Sharp AQUOS® LCD TV.

Information

Example



- 1 Press **MENU** to display the MENU screen, and then press **◀/▶** to select "Information".
- 2 Press **▲/▼** to select a specific adjustment item, and then press **ENTER**.
- 3 Press **▲/▼** (or **◀/▶**) to select the desired setting, and then press **ENTER**.
- 4 Press **MENU** to exit.

Identification

The current version of the TV software is displayed.

Digital Caption Info. (Digital Caption Information)

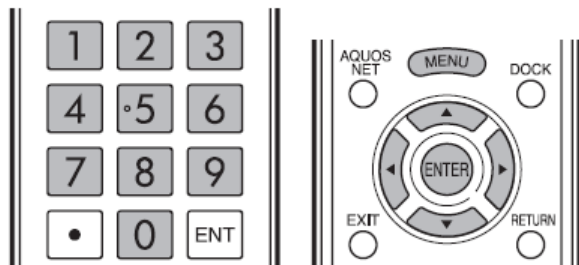
This function allows viewing of digital closed caption information for the digital broadcast program being viewed.

NOTE

- This list is not displayed for analog broadcasts or external input audio/video.
- This information is not included in CC1, CC2, Text1, or Text2, and is not displayed in a list.

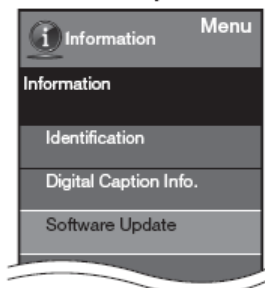
Software Update

This is used to upgrade the system software to enhance the TV functions.

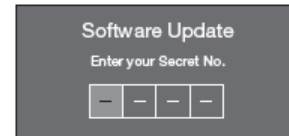


- 1 Press **MENU** to display MENU screen, and then press **◀/▶** to select "Information".
- 2 Press **▲/▼** to select "Software Update", and then press **ENTER**.
 - If you have already set the Secret No., go to step 3.

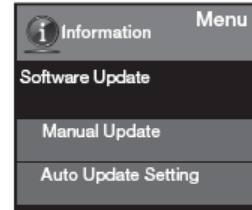
Example



- 3 Input the 4-digit secret number by using **0-9**.



- 4 Press **▲/▼** to select "Manual Update" or "Auto Update Setting", and then press **ENTER**.
 - The operations thereafter vary depending on the setting.



Manual Update

Select the method for manually updating the software.

Network Update: Downloads the update file via the network and then updates the software. (See page 35.)

USB memory: Updates the software using a USB memory device containing the update file. (See pages 35 to 36.)

NOTE

- A broadband connection and Internet Setting are required to update the software using the network. (See page 51.)
- It may take time to access and download the update depending on the Internet connection and other factors.

■ Updating the Software with a USB Memory Device

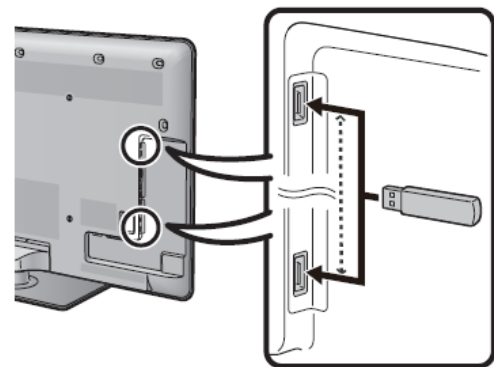
To check for the availability of a software update, visit <http://www.sharppusa.com/products/support/>. If you have any questions, please call 1-800-BE-SHARP (800-237-4277).

CAUTION

- **Do not remove the USB memory device or unplug the AC cord while the software is being updated.**
- **Be sure to properly follow the whole procedure described below, step by step. Otherwise, for example, the TV cannot read the data in the USB memory device and software updating will fail.**

- 1 Insert the USB memory device with the update file into the USB 1 or USB 2 terminal on the TV.

- When you update the software, use only one USB terminal. Either USB 1 or USB 2 is usable.



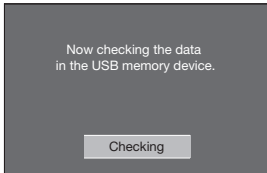
- 2 Press **◀/▶** on the Manual Update screen to select "USB Memory", and then press **ENTER**.

On-Screen Display Menu

- 3 Press **ENTER** to start checking the data in the USB memory device.

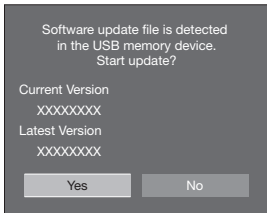


- 4 During the data checking, "Checking" blinks.

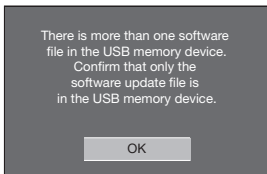
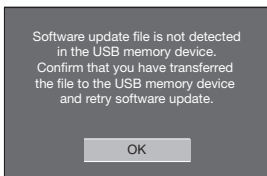


- The current version of the TV software and the version of the update file on the USB memory device are displayed. To update the TV software with the update file, select "Yes", and then press **ENTER**.

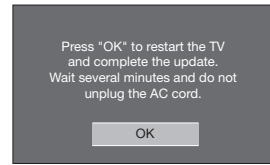
Example



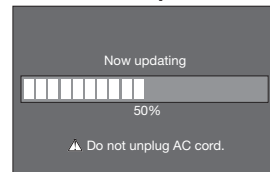
- If the USB memory device is not properly installed or the correct update file cannot be found on the USB memory device, an error message is displayed. Check the file on the USB memory device, and then reinsert the USB memory device correctly.



- 5 Press **ENTER** to start updating.



Example

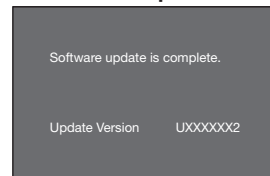


CAUTION

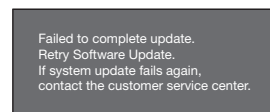
- Do not remove the USB memory device or unplug the AC cord while the software is being updated.**

- 6 When the software is successfully updated, a screen is displayed indicating that the update process is completed. After this screen is displayed, the TV automatically turns off and then turns on again.

Example



- If the update has failed, check the file in the USB memory device and try Software Update again.



- 7 After the screen shown below is displayed, press **ENTER**.



- 8 Remove the USB memory device.