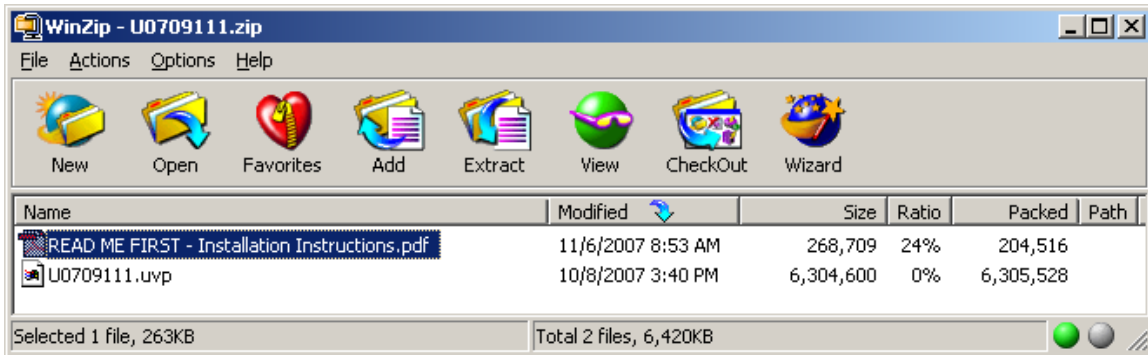




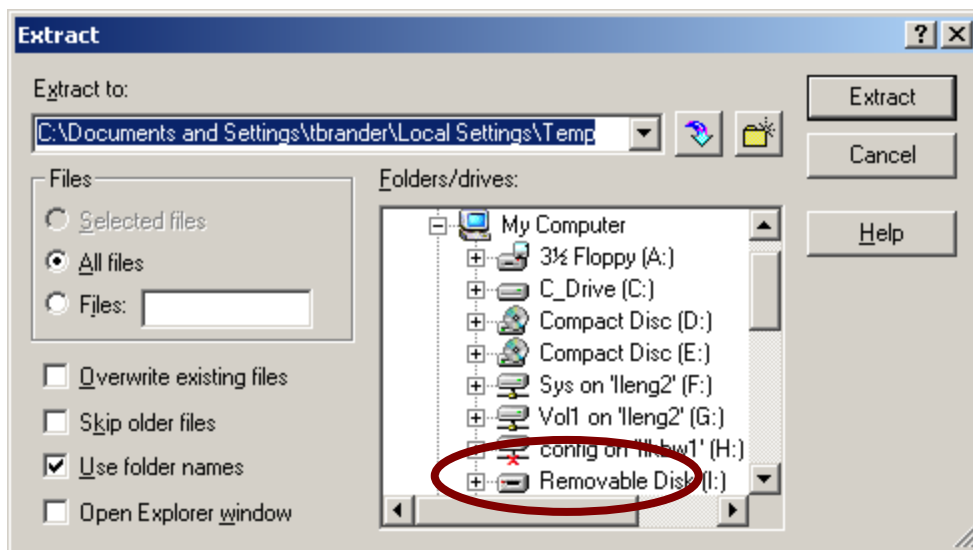
AQUOS® LCD TV Firmware Download Instructions:

Download Instructions:

1. Insert a USB memory device, into your PC's USB port. (The USB memory device **MUST** be formatted as **"FAT"**)
2. Double click the file: **"tel_soft_xxxxx_xxxx.zip"** to open the compressed file. It will open in a window similar to this:



3. Click on **"Extract"** to select where you want to save the files. Your USB memory device should appear with a name such as **"Removable Disk"** or with the brand name of the device. Click on the drive option for your USB memory device, and click **"Extract"**



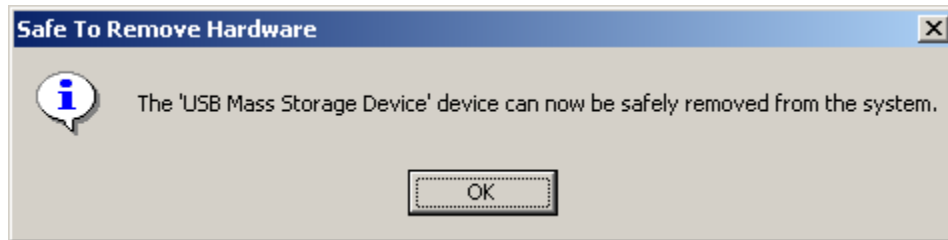
***Note – Do not Extract the Firmware update file to any sub-folder on the USB memory device. The Firmware update file must be in the root directory.**

4. Before removing your USB memory device from the computer, ensure that you “Safely Remove” it. Click on the icon that appears like this:



and is labeled “Safely Remove Hardware”.

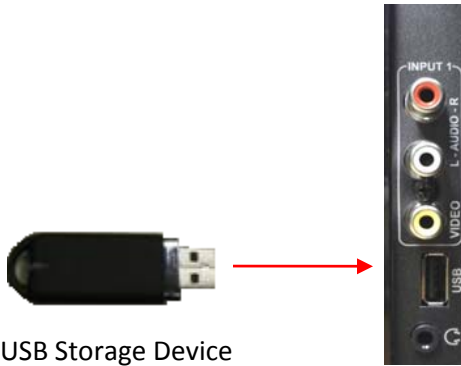
5. A small submenu will appear saying: “Stop USB Mass Storage Device” (a series of Drive letters may also be listed). A confirmation screen should appear, letting you know it is safe to remove the USB memory device.



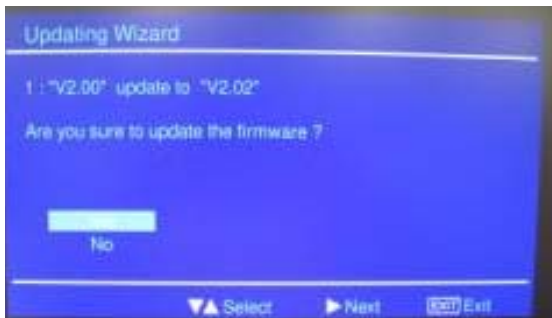
6. Physically remove your USB memory device from the USB port on your computer.
7. Follow the steps on the next page to perform the Firmware Upgrade of your Sharp AQUOS® LCD TV.

Firmware Update Procedure for SB28/48 LS410/LS510 and LE620 series models

1. While TV is powered ON, plug the USB device into the USB port on the TV.



2. The TV will automatically detect the firmware file and ask if you want to update the firmware, Select [Yes].



3. A status bar will be displayed during the update process.



4. Once the update is complete, a message will appear "The firmware is successfully updated."



5. The update is complete, now remove the USB device and turn OFF the TV.
6. To verify the new version, Press [Menu] on the RC and under Setup, select [Version Info] to display new version.

Model:	LC-22LS510UT
Version:	SH_F6_AT_DS V2.04 20100927