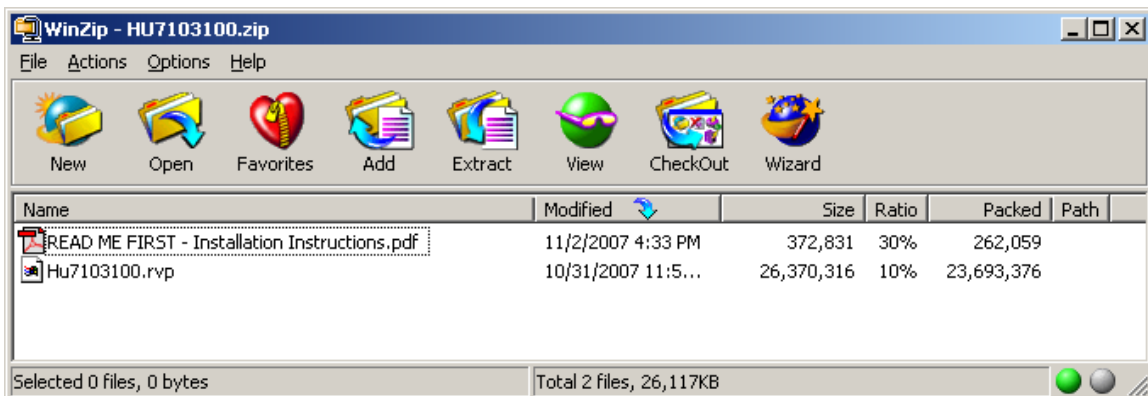




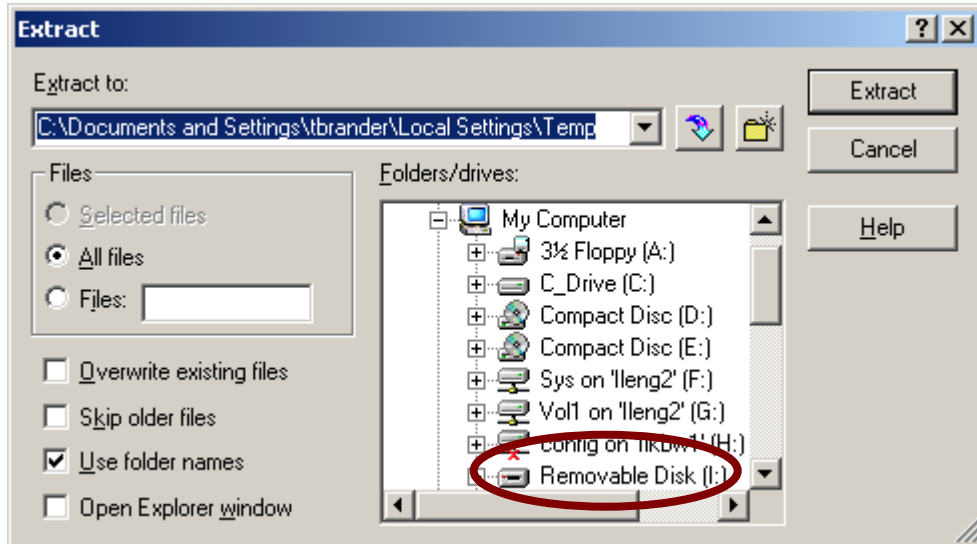
**LC32BD60U / LC37BD60U / LC42BD80U / LC46BD80U /
LC46BD80UN / LC52BD80U
Blu-ray Player Firmware Download Instructions:**

Download Instructions:

1. Insert a USB memory device, into your PC's USB port. (The USB memory device MUST be formatted as "FAT")
2. Double click the file: "dvd_soft_PUxxxxxxx.zip" to open the compressed file. It will open in a window similar to this:



3. Click on "Extract" to select where you want to save the files. Your USB memory device should appear with a name such as "Removable Disk" or with the brand name of the device. Click on the drive option for your USB memory device, and click "Extract"



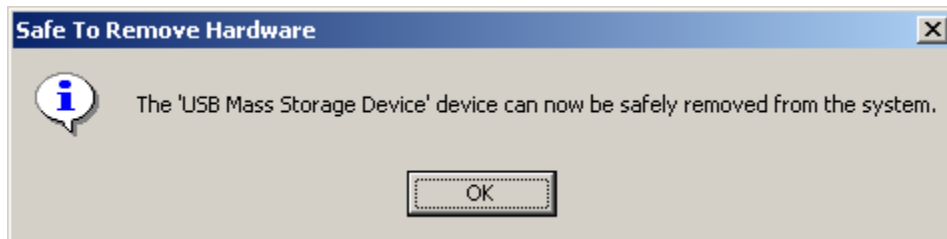
*Note – Do not Extract the Firmware update file to any sub-folder on the USB memory device. The Firmware update file must be in the root directory.

4. Before removing your USB memory device from the computer, ensure that you “**Safely Remove**” it. Click on the icon that appears like this:



and is labeled “**Safely Remove Hardware**”.

5. A small submenu will appear saying: “**Stop USB Mass Storage Device**” (a series of Drive letters may also be listed). A confirmation screen should appear, letting you know it is safe to remove the USB memory device.



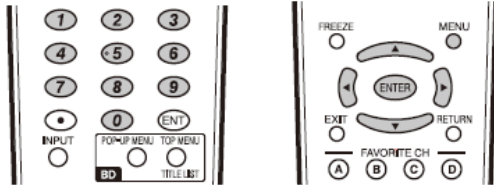
6. Physically remove your USB memory device from the USB port on your computer.
7. Follow the steps on the next page to perform the Firmware Upgrade of your Sharp Blu-ray player.

LC32BD60U, LC37BD60U, LC42BD80U, LC46BD80U, LC46BD80UN, LC52BD80U

Blu-ray Drive Software Update Instructions

Software Update

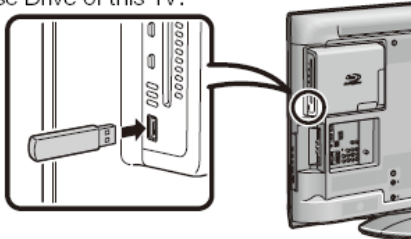
This function allows software updates by inserting a USB memory device with the update file into the BD STORAGE/SERVICE terminal on the Disc Drive of this TV. To check for the availability of a software update, visit www.sharpusa.com. If you have any questions, please call 1-800-BE-SHARP (800-237-4277).



CAUTION

- Do not remove the USB memory device or unplug the AC cord while the software is being updated.
- Do not use a USB extension cable when connecting a USB memory device to the BD STORAGE/SERVICE terminal on the Disc Drive of this TV.
- Using a USB extension cable may prevent the Disc Drive from performing correctly.

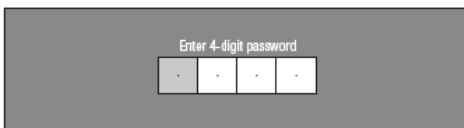
- Insert the USB memory device with the update file into the BD STORAGE/SERVICE terminal on the Disc Drive of this TV.



- Press **MENU** to display the MENU screen, and then press **◀/▶** to select "Option".
- Press **▲/▼** to select "Blu-ray disc Setup", and then press **ENTER**.
- Press **▲/▼** to select "Software Update", and then press **ENTER**.
 - If you have not yet set the password, go to step 6.



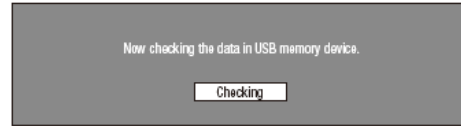
- Enter the 4-digit number by using **0-9**.



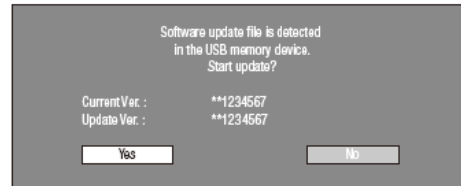
- Press **ENTER** to start checking data in the USB memory device.



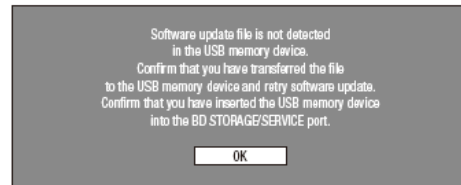
- During the data checking, "Checking" blinks.



- The current version of the Disc Drive software and the version of the update file on the USB memory device are displayed. To update the Disc Drive software with update file, select "Yes", and press **ENTER**.

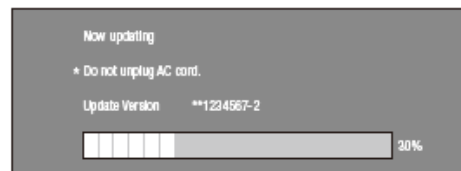


- If the USB memory device is not properly installed or the correct update file cannot be found on the USB memory device, an error message is displayed. Check the file on the USB memory device, and then reinsert the USB memory device correctly.



- Press **ENTER** to start updating.

- The screen becomes dark for a while until the update screen can be displayed. Please wait for the update screen to appear. Do not unplug the AC cord.



- When the software is successfully updated, a screen is displayed indicating that the update process is completed.

- If the update has failed, check the file in the USB device and try Software Update again.

- Press **TV POWER** to turn off the TV.

- Remove the USB memory device.