

Instantly Watching Movies from Netflix

Please check that the most current software is loaded on this player by selecting auto update on the player menu screen (See operation manual pages 46–47) or by visiting <http://www.sharppusa.com/products/support/> to check for a download of the newest software version.

This function allows you to enjoy Netflix through the Internet.

Netflix is an online DVD and Blu-ray Disc rental service, offering rental-by mail and streaming instantly to Netflix unlimited members.

- To enjoy this function, make a broadband Internet connection to both your PC and this player (See operation manual page 18), and then set communication settings (See operation manual pages 42–44), then perform the following operation.
- Before using this function, please read “Network Service Disclaimer” (page 3).

NOTE

- Netflix is not available when a proxy server is used for an Internet connection. (See operation manual pages 42–43.)
- As the registration process takes time, we recommend setting “Auto Power Off” to “No” before starting the registration. (See operation manual page 40.)
- The streaming quality (SD or HD) depends on the network speed and original bit rate of the title.
- For more information on the Netflix visit <http://www.netflix.com/help> or login to your Netflix account and click “Help” at the top of the page.
- Netflix is only available in the US.
- Illustrations are examples and may differ from the actual Netflix screens.

The buttons which can be used :

▲/▼/◀▶ / ENTER / ▶ PLAY / || PAUSE / ■ STOP / ◀◀ REV / ▶▶ FWD / EXIT

Settings for watching Netflix content on your TV

- 1 Press **SETUP** to display the menu screen.
 - The same operation can be performed by pressing **ENTER** after selecting the MENU icon on the Wall Paper screen.
- 2 Press ▲/▼ to select “e-Contents”, then press ▶ or **ENTER**.

The screen of this player shown on the TV



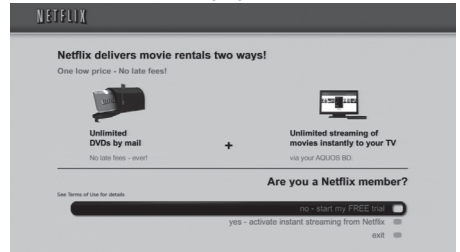
- 3 Press ▲/▼ to select “Netflix”, then press ▶ or **ENTER**.

- 4 Read the Disclaimer displayed on the screen. If you agree, press ▲ on the last page to select “Agree”, then press **ENTER**. (If you do not agree, this service cannot be used.)
- 5 Obtain the Netflix activation code.

If you don't have a Netflix account

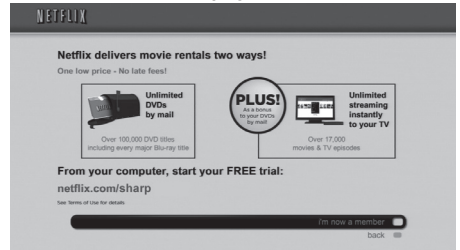
- ① Press ▲/▼ to select “no-start my FREE trial”, then press **ENTER**.

The screen of this player shown on the TV



- ② Subscribe by visiting <http://www.netflix.com/sharp> from your PC.
- ③ Press ▲/▼ to select “I'm now a member”, then press **ENTER**.

The screen of this player shown on the TV



If you have a Netflix account

Press ▲/▼ to select “yes-activate instant streaming from Netflix”, then press **ENTER**.

The screen of this player shown on the TV



6 You will see the following window.

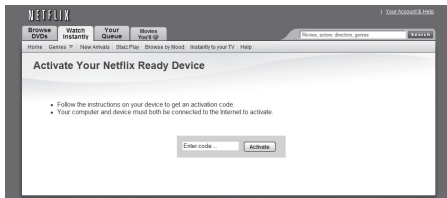
- The activation code is displayed.

The screen of this player shown on the TV



7 Using your PC, visit <http://www.netflix.com/activate>, and then enter the activation code displayed in step 6.

The screen of the PC



- After a period of time, the player will be activated, and the empty Instant Queue screen will be displayed on your TV from the player.

Adding content to the Instant Queue

8 To add a movie to the instant Queue of this player, select the "Add to Instant" button on Netflix "Watch Instantly" web page using your PC.

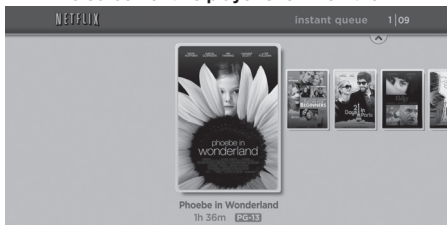
- After a period of time, the instant Queue registered using your PC will appear on your TV screen.

Playing back content in the Instant Queue on your TV

9 Press **◀▶** to select the desired title, then press **ENTER**.

- Once this function is set and the registration is completed, the next time this service is used instant Queue screens such as the following can be displayed directly by pressing **ENTER** after selecting the NETFLIX icon on the Wall Paper screen.

The screen of this player shown on the TV

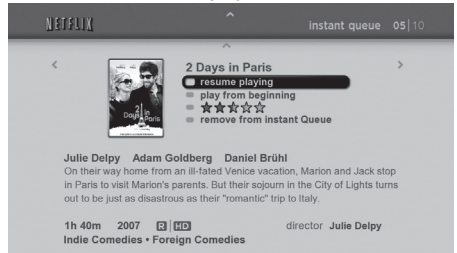


10 The title you selected is displayed.

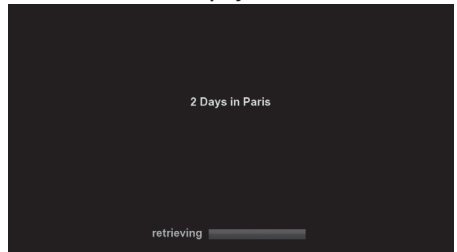
- To return to the step 9, press **▲**.

Press **▲/▼** to select "play", then press **ENTER** or **▶ PLAY** to start playback.

The screen of this player shown on the TV



The screen of this player shown on the TV



- After a period of time, playback of the movie begins.

11 To pause the playback at any time, press **|| PAUSE**.

- Press **|| PAUSE** or **▶ PLAY** to return to playback.

12 To stop the playback or go to step 10, press **▲** or **■ STOP**.

13 Press **EXIT** to exit.

Fast Forward/Reverse

The Fast Forward/Reverse function is enabled when **◀◀ REV** or **▶▶ FWD** is pressed during playback.

SETTINGS

Version

When you select "Version", the system software version and Netflix ESN are displayed.

System

Netflix Deactivate

You can deactivate your Netflix information on the player.

Item

Yes, No

Network Service Disclaimer

This Sharp device facilitates the access to content and services provided by third parties. The content and services accessible via this device belong to and may be proprietary to third parties. Therefore, any use of such third party content and services must be in accordance with any authorization or terms of use provided by such content or service provider. Sharp shall not be liable to you or any third party for your failure to abide by such authorization or terms of use. Unless otherwise specifically authorized by the applicable content or service provider, all third party content and services provided are for personal and non-commercial use; you may not modify, copy, distribute, transmit, display, perform, reproduce, upload, publish, license, create derivative works from, transfer or sell in any manner or medium any content or services available via this device.

Sharp is not responsible, nor liable, for customer service-related issues related to the third party content or services. Any questions, comments or service-related inquiries relating to the third party content or service should be made directly to the applicable content or service provider.

You may not be able to access content or services from the device for a variety of reasons which may be unrelated to the device itself, including, but not limited to, power failure, other Internet connection, or failure to configure your device properly. Sharp, its directors, officers, employees, agents, contractors and affiliates shall not be liable to you or any third party with respect to such failures or maintenance outages, regardless of cause or whether or not it could have been avoided.

ALL THIRD PARTY CONTENT OR SERVICES ACCESSIBLE VIA THIS DEVICE IS PROVIDED TO YOU ON AN "AS-IS" AND "AS AVAILABLE" BASIS AND SHARP AND ITS AFFILIATES MAKE NO WARRANTY OR REPRESENTATION OF ANY KIND TO YOU, EITHER EXPRESS OR IMPLIED, INCLUDING, WITHOUT LIMITATION, ANY WARRANTIES OF MERCHANTABILITY, NON-INFRINGEMENT, FITNESS FOR A PARTICULAR PURPOSE OR ANY WARRANTIES OF SUITABILITY, AVAILABILITY, ACCURACY, COMPLETENESS, SECURITY, TITLE, USEFULNESS, LACK OF NEGLIGENCE OR ERROR-FREE OR UNINTERRUPTED OPERATION OR USE OF THE CONTENT OR SERVICES PROVIDED TO YOU OR THAT THE CONTENT OR SERVICES WILL MEET YOUR REQUIREMENTS OR EXPECTATIONS.

SHARP IS NOT AN AGENT OF AND ASSUMES NO RESPONSIBILITY FOR THE ACTS OR OMISSIONS OF THIRD PARTY CONTENT OR SERVICE PROVIDERS, NOR ANY ASPECT OF THE CONTENT OR SERVICE RELATED TO SUCH THIRD PARTY PROVIDERS.

IN NO EVENT WILL SHARP AND/OR ITS AFFILIATES BE LIABLE TO YOU OR ANY THIRD PARTY FOR ANY DIRECT, INDIRECT, SPECIAL, INCIDENTAL, PUNITIVE, CONSEQUENTIAL OR OTHER DAMAGES, WHETHER THE THEORY OF LIABILITY IS BASED ON CONTRACT, TORT, NEGLIGENCE, BREACH OF WARRANTY, STRICT LIABILITY OR OTHERWISE AND WHETHER OR NOT SHARP AND/OR ITS AFFILIATES HAVE BEEN ADVISED OF THE POSSIBILITY OF SUCH DAMAGES.